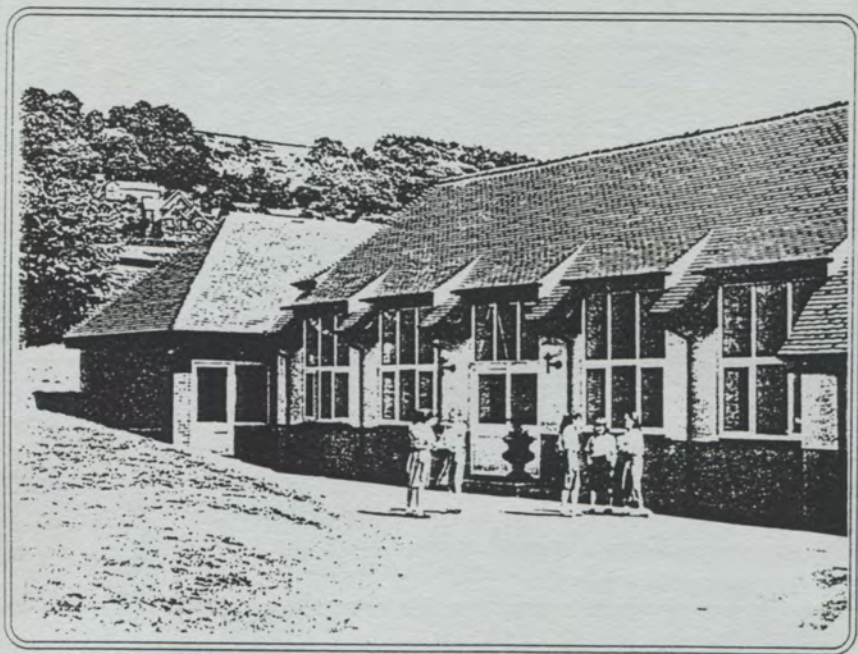


# ST ELPHIN'S SCHOOL

DARLEY DALE  
MATLOCK  
DERBYSHIRE

*~ aiming for the top*

JUNIOR SCHOOL  
for Girls Aged 7 to 11 Years



A First-Rate Start  
From a First-Rate School

# OUR AIM

St Elphin's School is a happy, caring community founded on Christian principles. Our aim is to enable each child to achieve her full potential, to give her a chance to discover her particular strengths (academic or otherwise) to shine in them, and develop a measure of self-esteem and confidence, while learning consideration for and understanding of others.

## Small Classes

The work is tailored to a child's particular requirements; time is devoted to individual children, who benefit greatly from our generous pupil/teacher ratio.



## Excellent Facilities

The recently refurbished accommodation and new equipment provide a bright, stimulating environment for work, with scope for exciting displays. The Junior School has close contact with the Senior School, sharing many of its excellent facilities, such as gymnasium, computer room, hall and stage, courts and pitches.

## Caring Staff

Experienced and dedicated staff in whom you may have complete confidence; all are well qualified, and French, PE, Music and Drama are taught by specialist staff.



## Curriculum

We follow the National Curriculum, able to select the best features, since as an independent school we are not obliged to adopt it in its entirety. All the usual academic subjects are studied as well as French, Music, Drama, Technology, Computing and Textiles.



# OUR AIM

St Elphin's School is a happy, caring community founded on Christian principles. Our aim is to enable each child to achieve her full potential, to give her a chance to discover her particular strengths (academic or otherwise) to shine in them, and develop a measure of self-esteem and confidence, while learning consideration for and understanding of others.

## Small Classes

The work is tailored to a child's particular requirements; time is devoted to individual children, who benefit greatly from our generous pupil/teacher ratio.



## Excellent Facilities

The recently refurbished accommodation and new equipment provide a bright, stimulating environment for work, with scope for exciting displays. The Junior School has close contact with the Senior School, sharing many of its excellent facilities, such as gymnasium, computer room, hall and stage, courts and pitches.

## Caring Staff

Experienced and dedicated staff in whom you may have complete confidence; all are well qualified, and French, PE, Music and Drama are taught by specialist staff.



## Curriculum

We follow the National Curriculum, able to select the best features, since as an independent school we are not obliged to adopt it in its entirety. All the usual academic subjects are studied as well as French, Music, Drama, Technology, Computing and Textiles.

## Surroundings

Situated on the edge of the Derbyshire Peak District, we have easy access to many places suitable for field-work and educational visits. There is a newly equipped play area, and our extensive grounds provide a safe and beautiful environment to explore and enjoy.

## Other Advantages

- Healthy, balanced meals are freshly cooked on the premises.
- The resident Sanatorium Sister deals immediately with medical problems.
- Sensible uniform policy; our "nearly new" shop helps to keep costs low.

Do come to visit us.

Sheelagh Willies, the Head of the Junior School, will be delighted to show you round.

Please telephone for further information:  
0629 732687

St Elphin's School  
Darley Dale  
Matlock  
Derbyshire DE4 2HA

